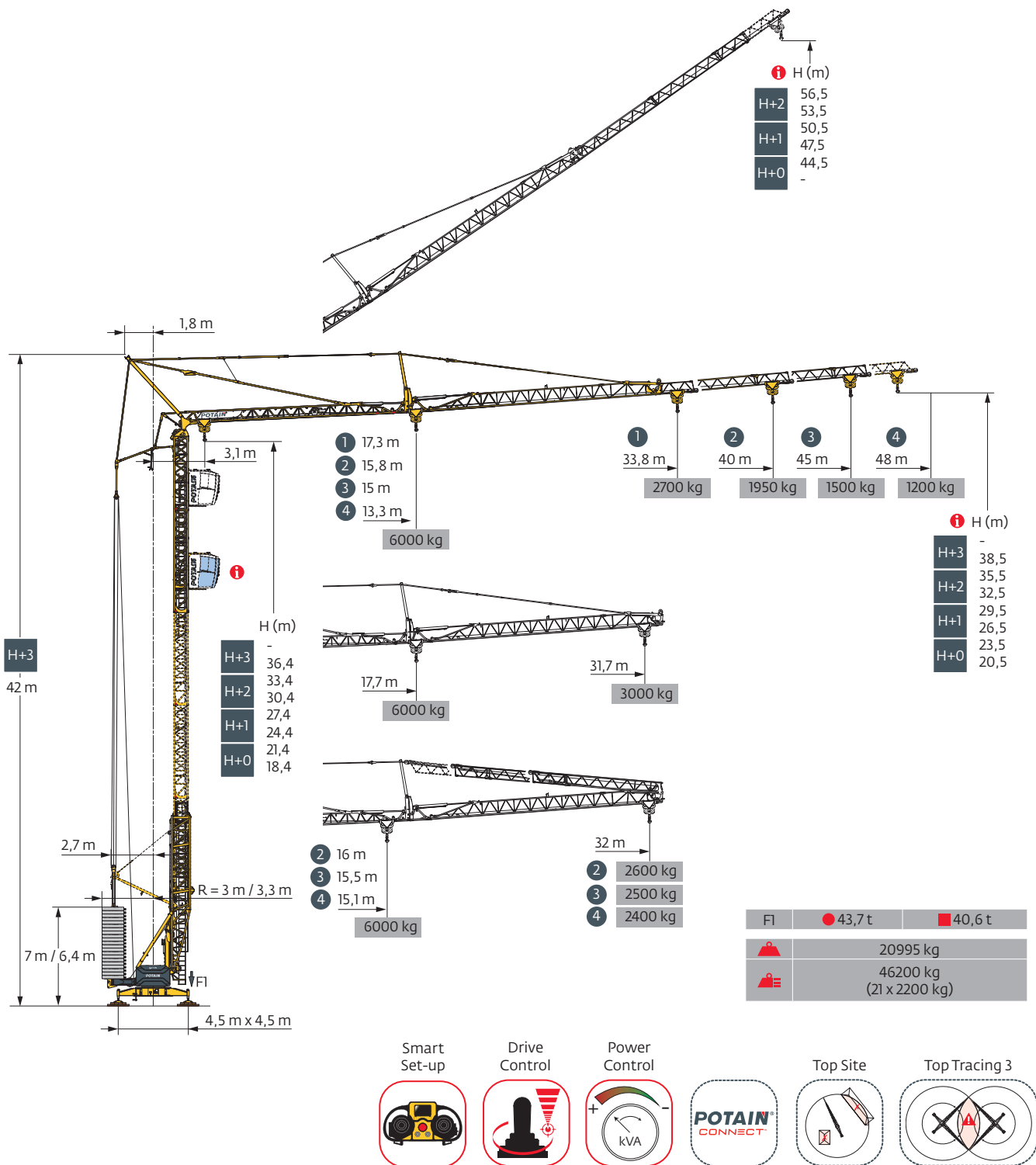
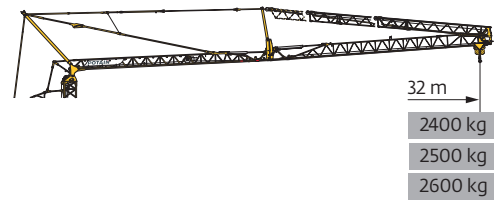
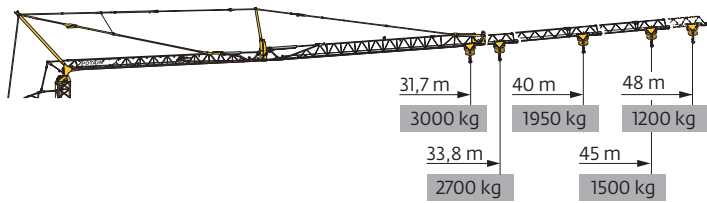


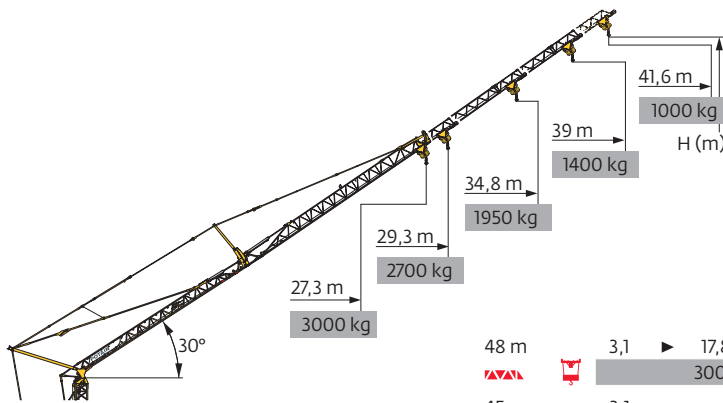
Igo T 99



Courbes de charges / Lastkurven / Load curves / Curvas de cargas / Curve di carico
Curvas de carga / Кривые нагрузок

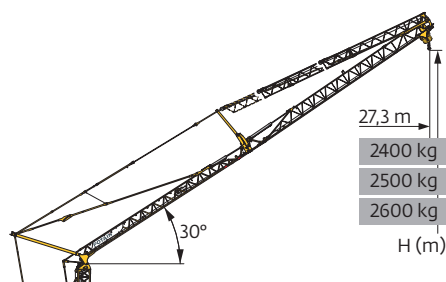


48 m	3,1	▶	13,3	14	16	18	20	22	24	26	28	30	32	34	36	38	40	42	44	46	48	m
▲▲▲▲	▲▲▲▲		6000	5600	4800	4100	3600	3200	2900	2650	2400	2200	2050	1900	1750	1650	1550	1450	1350	1250	1200	kg
45 m	3,1	▶	15	16	18	20	22	24	26	28	30	32	34	36	38	40	42	44	45			m
▲▲▲▲	▲▲▲▲		6000	5500	4800	4200	3700	3300	3000	2750	2500	2300	2150	2000	1850	1750	1650	1550	1500			kg
40 m	3,1	▶	15,8	16	18	20	22	24	26	28	30	32	34	36	38	40						m
▲▲▲▲	▲▲▲▲		6000	5900	5100	4500	4000	3600	3300	3000	2800	2550	2400	2200	2100	1950						kg
33,8 m	3,1	▶	17,3	18	20	22	24	26	28	30	32	33,8										m
▲▲▲▲	▲▲▲▲		6000	5700	5100	4500	4100	3700	3400	3100	2900	2700										kg
31,7 m	3,1	▶	17,7	18	20	22	24	26	28	30	31,7											m
▲▲▲▲	▲▲▲▲		6000	5900	5200	4600	4200	3800	3500	3200	3000											kg
48 m	3,1	▶	15,1	16	18	20	22	24	26	28	30	32										m
▲▲▲▲	▲▲▲▲		6000	5600	4800	4200	3800	3400	3100	2850	2600	2400										kg
45 m	3,1	▶	15,5	16	18	20	22	24	26	28	30	32										m
▲▲▲▲	▲▲▲▲		6000	5800	5000	4400	3900	3500	3200	2950	2700	2500										kg
40 m	3,1	▶	16	18	20	22	24	26	28	30	32											m
▲▲▲▲	▲▲▲▲		6000	5200	4600	4100	3700	3300	3100	2800	2600											kg



▲▲▲▲	48 m	45 m	40 m	33,8 m	31,7 m	
H (m)	H+2	56,5	55	52,5	-	-
		53,5	52	49,5	-	-
	H+1	50,5	49	46,5	43,4	42,2
		47,5	46	43,5	40,4	39,2
H+0	44,5	43	40,5	37,4	36,2	
	-	-	-	-	-	




48 m	3,1	▶	17,8	20	22	24	26	28	30	32	34	36	38	40	41,6	m
▲▲▲▲	▲▲▲▲		3000	2600	2300	2050	1850	1700	1550	1450	1300	1200	1150	1050	1000	kg
45 m	3,1	▶	21,2	22	24	26	28	30	32	34	36	38	39			m
▲▲▲▲	▲▲▲▲		3000	2850	2600	2350	2150	1950	1800	1650	1550	1450	1400			kg
40 m	3,1	▶	24,5	26	28	30	32	34,8								m
▲▲▲▲	▲▲▲▲		3000	2800	2550	2350	2150	1950								kg
33,8 m	3,1	▶	27	28	29,3											m
▲▲▲▲	▲▲▲▲		3000	2850	2700											kg
31,7 m	3,1	▶	27,3													m
▲▲▲▲	▲▲▲▲		3000													kg



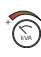




48 m	3,1	▶	22,7	24	26	27,3	m
▲▲▲▲	▲▲▲▲		3000	2800	2550	2400	kg
45 m	3,1	▶	23,5	24	26	27,3	m
▲▲▲▲	▲▲▲▲		3000	2900	2650	2500	kg
40 m	3,1	▶	24,3	26	27,3	m	
▲▲▲▲	▲▲▲▲		3000	2750	2600	kg	

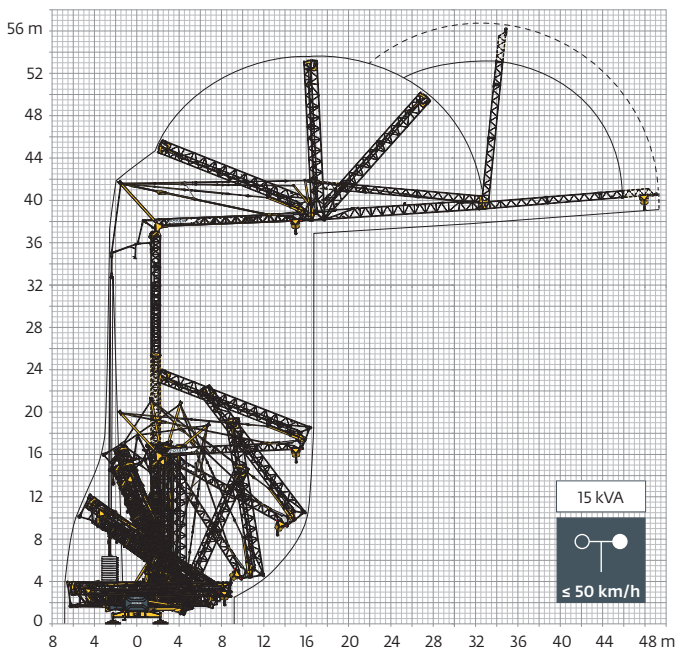
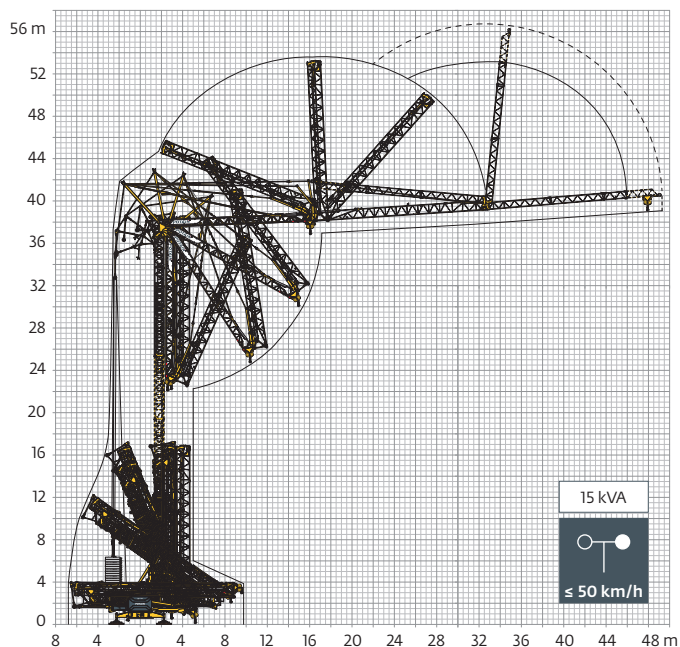
▲▲▲▲	48 m	45 m	40 m
H (m)	H+1	42,2	
		39,2	
	H+0	36,2	
	-		

Mécanismes / Triebwerke / Mechanisms / Mecanismos / Meccanismi
 Mecanismos / Механизмы

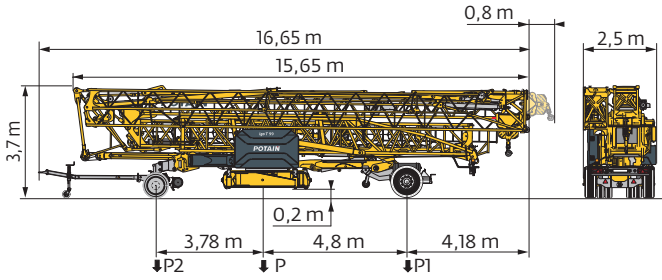
400 V - 50 Hz 480 V - 60 Hz							ch - PS hp	kW	
	25 HPL™ 15	m/min	2,1	16	30	46	54	25	19
		kg	6000	6000	3000	1500	1200		
	5 DVF 5 Optima	m/min	14,7	39	55	70		5,5	4
		kg	6000	6000	2000	200			
	HPS 152	tr/min U/min rpm	0 → 0,8					2 x 5,5	2 x 4

 IEC 60204-32	 kVA	
400 V (+10% -10%) 50 Hz / 480 V (+6% -10%) 60 Hz	 29 → 21 kVA  34 → 24 kVA	

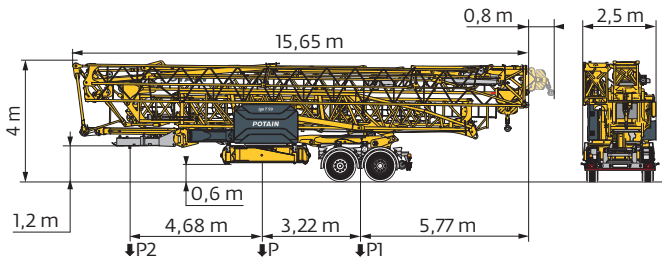
Montage / Montage / Erection / Montaje / Montaggio
 Montagem / Монтаж



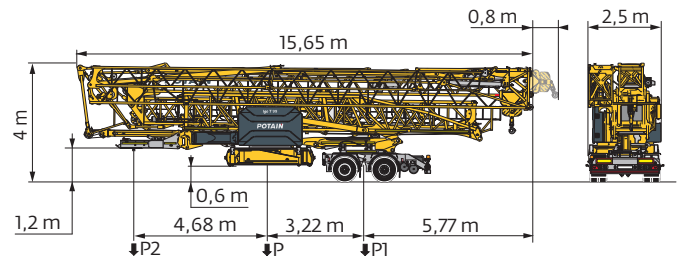
Transport / Transport / Transport / Transporte / Trasporto
Transporte / Транспортировка



	km/h	P (kg)	P1 (kg)	P2 (kg)
DJ126MA/S125A	25	22985	12000	10985



	km/h	P (kg)	P1 (kg)	P2 (kg)
SL121/S215M	25	24025	16910	7115



	km/h	P (kg)	P1 (kg)	P2 (kg)
SL122/J215M (EBS)	80	23945	16810	7135

FR

DE

EN

ES

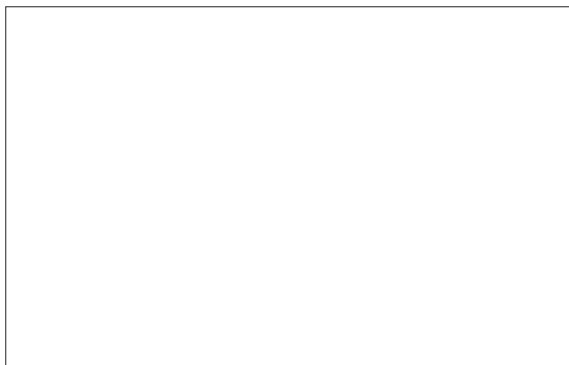
IT

PT

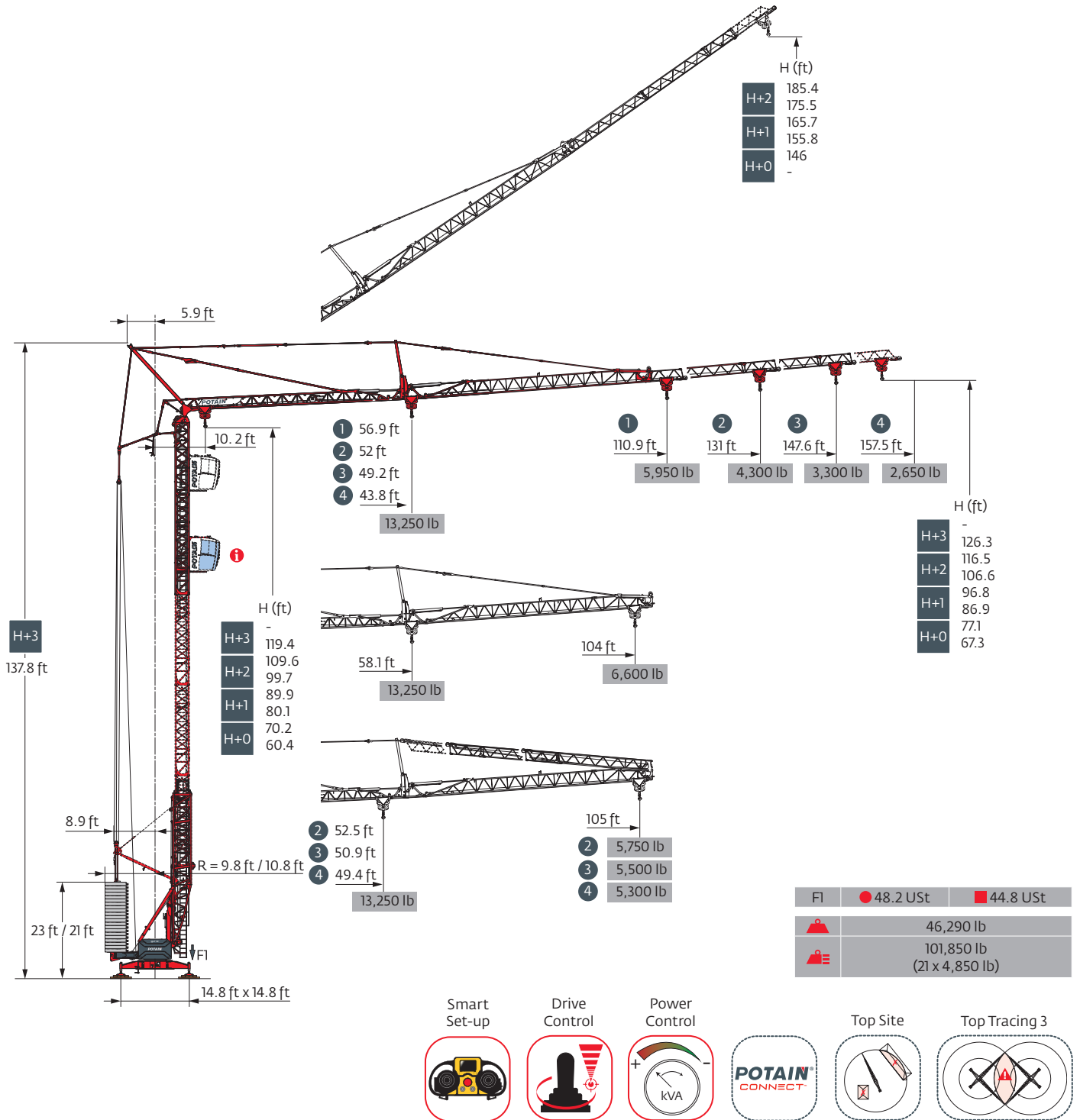
RU

R	Rayon de giration	Schwenk radius	Rear slewing radius	Radio de giro	Raggio di rotazione	Raio de rotação	Задний габарит
i	Nous consulter	Auf Anfrage	Consult us	Consultarnos	Consultateci	Consultar-nos	Проконсультируйтесь у нас
●	Réactions en service	Reaktionskräfte in Betrieb	Reactions in service	Reacciones en servicio	Reazioni in servizio	Reacções em serviço	Реакция при работе
■	Réactions hors service	Reaktionskräfte außer Betrieb	Reactions out of service	Reacciones fuera de servicio	Reazioni fuori servizio	Reacções fora de serviço	Реакция в покое
⚖	Poids à vide, sans lest, sans trains de transport, avec flèche maxi. et hauteur standard.	Gewicht ohne Last, ohne Ballast, ohne Transportachsen mit max. Auslager und Standardhöhe	Weight without load, without ballast, without transport axes, with max. jib and standard height	Peso en vacío, sin lastre, sin trenes de transporte con flecha y altura estándar	Peso a vuoto, senza zavorra, senza assali di trasporto, con braccio max e altezza standard.	Peso em vazio, sem lastro, sem eixos de transporte com lança máxima e altura standard.	Вес без груза, без балласта, без осей для транспортировки, с максимальным вылетом стрелы и стандартной высотой
⚖	Poids total du lest	Ballast-Gesamtgewicht	Total ballast weight	Peso total del lastre	Peso totale della zavorra	Peso total do lastro	Общий вес балласта
□	Équipements standards	Standardausrüstungen	Standard equipment	Equipamiento de serie	Equipaggiamento standard	Equipamento de série	Стандартное оборудование
⊞	Équipements optionnels	Sonderausrüstungen	Options	Equipamiento opcional	Equipaggiamento in opzione	Equipamento opcional	Дополнительное оборудование (опция)
⬆	Levage	Heben	Hoisting	Elevación	Sollevamento	Elevação	Подъем
⬆	Distribution	Katzfahren	Trolleying	Distribución	Distribuzione	Distribuição	Перемещение по стреле
⬆	Orientation	Schwenken	Slewing	Orientación	Rotazione	Rotação	Поворот
kVA	Puissance requise	Erforderliche Leistung	Required power	Potencia Necesaria	Potenza richiesta	Potência Necessária	Потребляемая мощность
⚙	Fonction Power Control : vitesses treuils adaptées à la puissance disponible	Funktion Power Control: Geschwindigkeiten der Triebwerke werden an die verfügbare Leistung angepasst	Power Control Function: winch speeds adapted to the available power	Función Power Control: marchas de los cabrestantes adaptadas a la potencia disponible	Funzione Power Control: velocità degli organi adattate alla potenza disponibile	Função Power Control: velocidades de guincho adaptadas à potência disponível	Функция контроля мощности Power Control: регулировка скорости лебедок в зависимости от доступной мощности

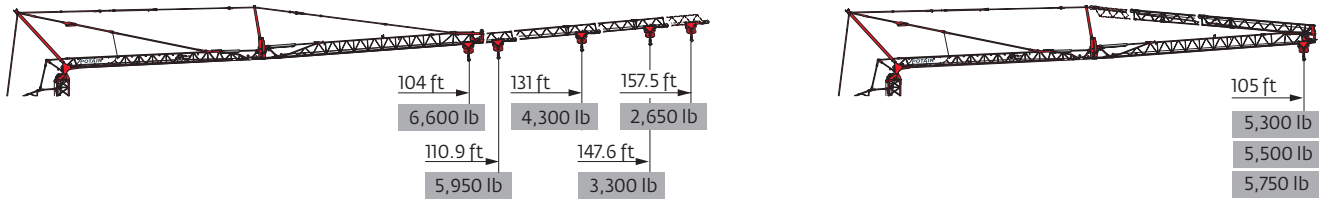
⚠	Hauteurs sous crochet données moufle plaquée	Hakenhöhen werden mit plattiertem Haken angegeben	Hook heights given with plated pulley block	Altura bajo gancho con pasteca bloqueada	Altezza sotto gancio con bozzello in contatto con carrello	Altura ao gancho com o cadernal em contacto com o carrinho	высота под крюком дана при условии, что крюковая подвеска соприкасается с кареткой
	Document commercial non contractuel	Unverbindliches Vertriebsdokument	This commercial document is not legally binding	Documento comercial no contractual	Documento commerciale non vincolante	Documento comercial não contratual	Этот коммерческий документ не является юридически обязательным
	Pour toute information technique se référer à la notice correspondante	Für technische Informationen, siehe die entsprechenden Anweisungen	For any technical information, please refer to the corresponding instructions	Para cualquier información técnica, ver la noticia correspondiente	Per tutte le informazioni tecniche fare riferimento al catalogo istruzioni	Para qualquer informação técnica complementar consultar as respectivas instruções	Для получения технической информации, см. соответствующие инструкции



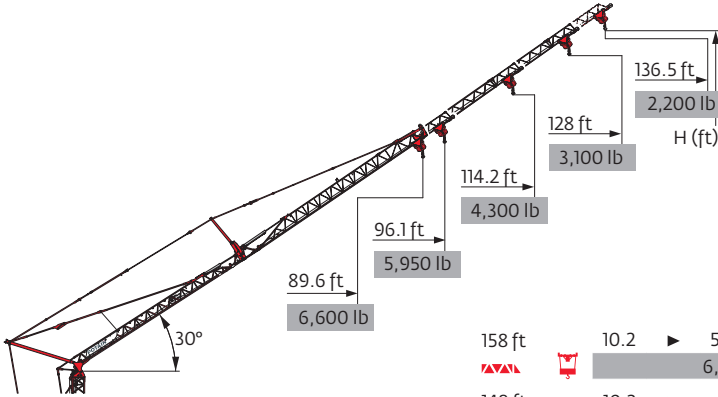
Igo T 99



Load curves

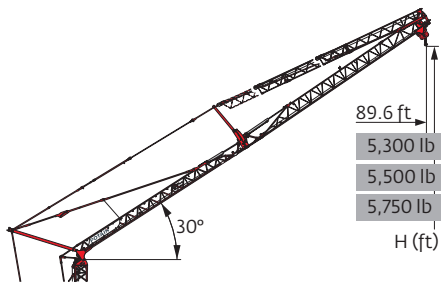


158 ft	10.2	▶	43.8	46	53	59	66	72	79	85	92	98	105	112	118	125	131	138	144	151	157.5	ft
▲▲▲	▲▲▲	▲▲▲	13,250	12,450	10,550	9,150	8,050	7,150	6,400	5,800	5,300	4,850	4,500	4,150	3,850	3,600	3,400	3,150	3,000	2,800	2,650	lb
148 ft	10.2	▶	49.2	53	59	66	72	79	85	92	98	105	112	118	125	131	138	144	147.6	ft		
▲▲▲	▲▲▲	▲▲▲	13,250	12,200	10,500	9,200	8,150	7,300	6,600	6,000	5,500	5,100	4,700	4,400	4,100	3,850	3,600	3,400	3,300	lb		
131 ft	10.2	▶	52	53	59	66	72	79	85	92	98	105	112	118	125	131	ft					
▲▲▲	▲▲▲	▲▲▲	13,250	13,050	11,350	10,000	8,900	8,000	7,300	6,650	6,150	5,650	5,250	4,900	4,600	4,300	lb					
111 ft	10.2	▶	56.9	59	66	72	79	85	92	98	105	110.9	ft									
▲▲▲	▲▲▲	▲▲▲	13,250	12,650	11,150	9,950	8,950	8,150	7,450	6,850	6,350	5,950	lb									
104 ft	10.2	▶	58.1	59	66	72	79	85	92	98	104	ft										
▲▲▲	▲▲▲	▲▲▲	13,250	13,000	11,450	10,200	9,200	8,400	7,650	7,050	6,600	lb										
158 ft	10.2	▶	49.4	53	59	66	72	79	85	92	98	105	ft									
▲▲▲	▲▲▲	▲▲▲	13,250	12,250	10,650	9,350	8,350	7,500	6,800	6,250	5,750	5,300	lb									
148 ft	10.2	▶	50.9	53	59	66	72	79	85	92	98	105	ft									
▲▲▲	▲▲▲	▲▲▲	13,250	12,750	11,050	9,750	8,700	7,800	7,100	6,500	5,950	5,500	lb									
131 ft	10.2	▶	52.5	53	59	66	72	79	85	92	98	105	ft									
▲▲▲	▲▲▲	▲▲▲	13,250	13,200	11,450	10,100	9,000	8,100	7,350	6,750	6,200	5,750	lb									



▲▲▲	158 ft	148 ft	131 ft	111 ft	104 ft	
H (ft)	H+2	185.4	180.4	172.2	-	-
	H+1	165.7	160.8	152.6	142.4	138.5
	H+0	146	141.1	132.9	122.7	118.8
	-	-	-	-	-	





158 ft	10.2	▶	58.5	66	72	79	85	92	98	105	112	118	125	131	136.5	ft
▲▲▲	▲▲▲	▲▲▲	6,600	5,700	5,100	4,550	4,100	3,750	3,400	3,150	2,900	2,700	2,500	2,350	2,200	lb
148 ft	10.2	▶	69.6	72	79	85	92	98	105	112	118	125	128	ft		
▲▲▲	▲▲▲	▲▲▲	6,600	6,350	5,700	5,150	4,700	4,300	4,000	3,700	3,400	3,200	3,100	lb		
131 ft	10.2	▶	80.2	85	92	98	105	114.2	ft							
▲▲▲	▲▲▲	▲▲▲	6,600	6,150	5,600	5,150	4,750	4,300	lb							
111 ft	10.2	▶	88.6	92	96.1	ft										
▲▲▲	▲▲▲	▲▲▲	6,600	6,300	5,950	lb										
104 ft	10.2	▶	89.6	ft												
▲▲▲	▲▲▲	▲▲▲	6,600	lb												









158 ft	10.2	▶	74.6	79	85	89.6	ft
▲▲▲	▲▲▲	▲▲▲	6,600	6,200	5,600	5,300	lb
148 ft	10.2	▶	77.1	79	85	89.6	ft
▲▲▲	▲▲▲	▲▲▲	6,600	6,450	5,850	5,500	lb
131 ft	10.2	▶	79.6	85	89.6	ft	
▲▲▲	▲▲▲	▲▲▲	6,600	6,100	5,750	lb	

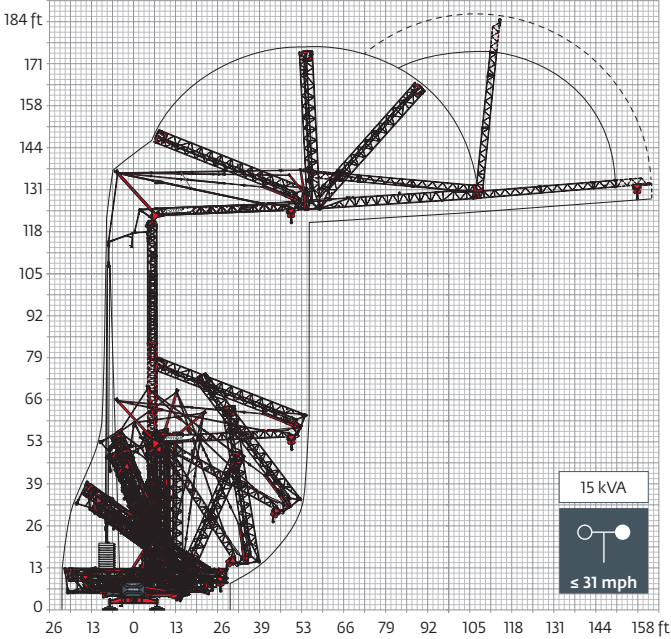
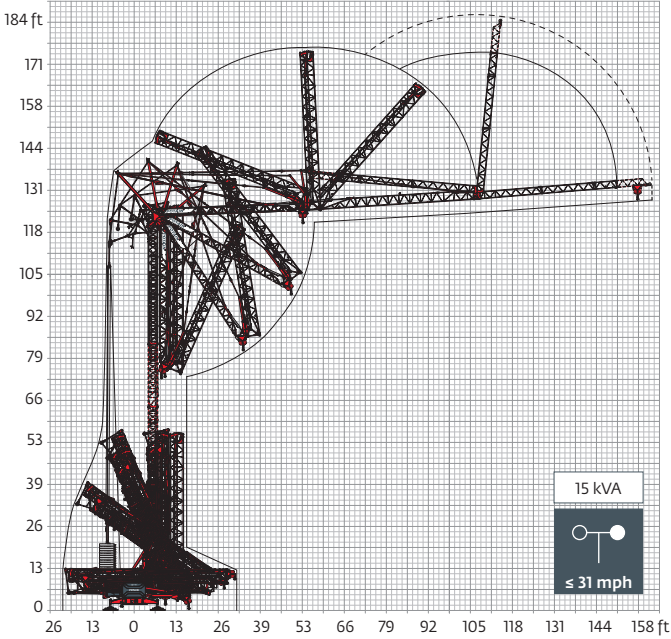
▲▲▲	158 ft	148 ft	131 ft
H (ft)	H+1	138.5	
	H+0	128.6	
		118.8	
	-	-	-

Mechanisms

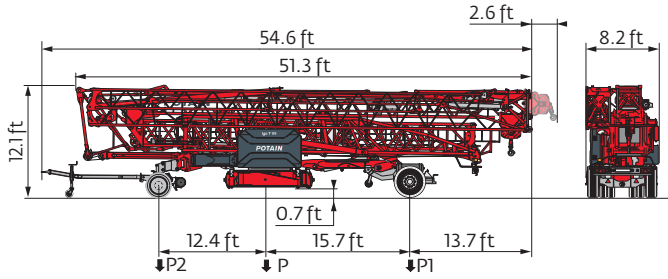
480 V - 60 Hz								hp	kW
	25 HPL™ 15	fpm	7	52	98	151	177	25	19
		lb	13,250	13,250	6,600	3,300	2,650		
	5 DVF 5 Optima	fpm	48	128	180	230		5.5	4
		lb	13,250	13,250	4,400	440			
	HPS 152	rpm	0 → 0.8					2 x 5.5	2 x 4

 IEC 60204-32	 kVA	
480 V (+6% -10%) 60 Hz	 29 → 21 kVA  34 → 24 kVA	

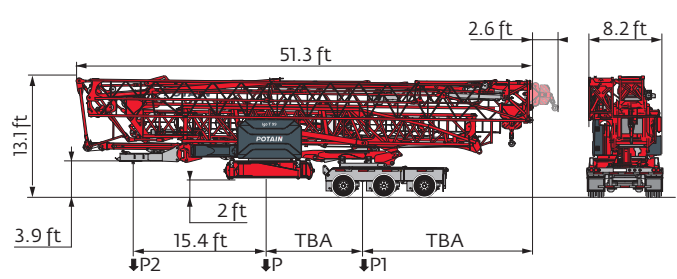
Erection



Transport



	mph	P (lb)	P1 (lb)	P2 (lb)
DJ126MA/S125A	15.5	50,670	26,450	24,220



	mph	P (lb)	P1 (lb)	P2 (lb)
North America Highway Axle	31	i	i	i

The reactions meet the EN 14439 and ASCE 7-10 specifications for "out of service" wind conditions, provided the illustrated wind speed matches required design wind speed for the location of the tower crane. The "out of service" design wind speed was determined in accordance with ASCE 7-10, Figure 26.5-1A. The wind velocity, used for this configuration was 98 mph (158 kph), which represents a nominal design 3-second wind gust at 33 ft (10 m) above ground for Exposure B category. A factor of 0.85 was applied to the 700-year ultimate design wind speed of 115 mph (185 kph), per ASCE 37-02, with the assumption that this crane is considered a temporary structure used during a construction period of 2 years or less.

- R** Rear slewing radius
- Reactions in service
- Reactions out of service
- ⚖** Weight without load, without ballast, without transport axles, with max. jib and standard height
- ⚖** Total ballast weight
- Standard equipment
- ⊞** Options
- i** Consult us
- ⬆** Hoisting
- ⬆** Trolleying
- ⬆** Slewing
- kVA** Required power
- ⌚** Power Control Function: winch speeds adapted to the available power

Hook heights given with plated pulley block

⚠ This commercial document is not legally binding

For any technical information, please refer to the corresponding instructions

